



Leibniz Institute of Agricultural Development
in Transition Economies

Measuring agricultural policies

Prof. Dr. Thomas Herzfeld

BUSINESS NEWS APRIL 15, 2020 / 12:18 PM / 2 MONTHS AGO

Exclusive: Ukraine ready to ban wheat exports if necessary - official

Pavel Polityuk, Sergei Karazy

www.reuters.com

4 MIN READ



New EU budget 2021-2027:

In regards to CAP and environment funding, the total level of commitments is set at €346 billion, of which €254.247 billion will go mostly to farmers (market related expenditure and direct payments).

www.euractiv.com, 2. Dec. 2019

The share of agriculture in Kazakhstan's GDP has not exceeded 4.5 percent despite more than 2.4 trillion tenge (US\$6.3 billion) allocated to the sector over the past five years. The Ministry of Agriculture has been directed to create conditions for the processing of raw products in the country.

www.astanatimes.com, 25. Jan. 2020

Who can compare the monetary effects at farm level?

Direct effect on
agricultural markets

Indirect effect on
agricultural markets

Border measures

Domestic
measures

Distortional
elements

Non-
distortional
instruments

Examples

- Tariffs & taxes
- Quotas

Examples

- Intervention prices
- Taxes & subsidies (coupled)
- Quotas

Examples

- Decoupled direct payments
- Sector specific social policies

Examples

- Food safety laws
- Quality standards

The origins: Nominal Protection

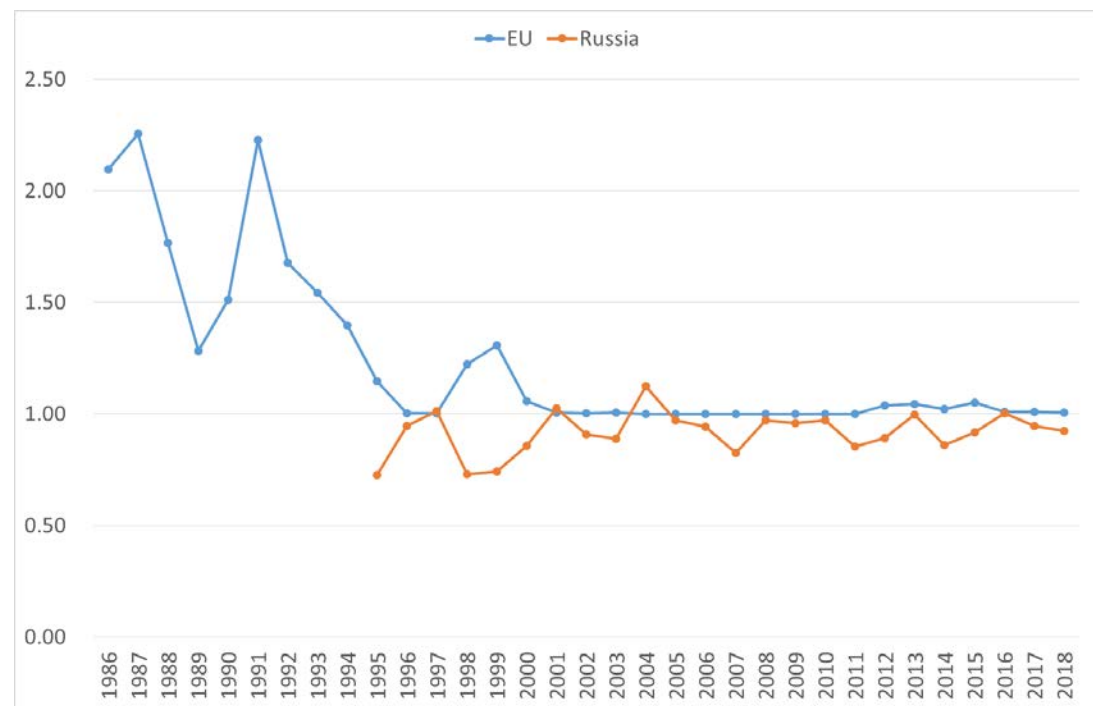
- What is the difference in prices caused by border measures?
- First studies: Josling (1973) and Valdes (1973)
- Nominal Protection

Coefficient

$$\text{NPC} = p_i / p_w$$

- Nominal Rate of Protection

$$\text{NPR} = (p_i - p_w) / p_w = \text{NPC} - 1$$



Source: OECD (2019)

Nominal \neq Effective protection?

- Grain production
 - Tariff rate 10%
 - NPC=1.1

- Poultry production
 - Tariff rate: 10%
 - NPC=1.1

But input costs higher
compared to world market
situation!

Nominal ≠ Effective protection (often)

- Effective Coefficient of Protection $EPC = \text{ValueAdded } (VA)_i / VA_w$
 - Effective Rate of Protection $EPR = EPC - 1$

- Relation between nominal and effective protection:

$$VA_i = p_i q - w_i x$$

$$VA_w = p_w q - w_w x$$

- Example: Ad valorem tariff protection

$$p_i = (1 + t_o) p_w$$

$$r_i = (1 + t_i) w_w$$

$$EPC = \frac{(1 + t_o) p_w q - (1 + t_i) w_w x}{p_w q - w_w x} = 1 + \frac{t_o p_w q - t_i w_w x}{p_w q - w_w x}$$

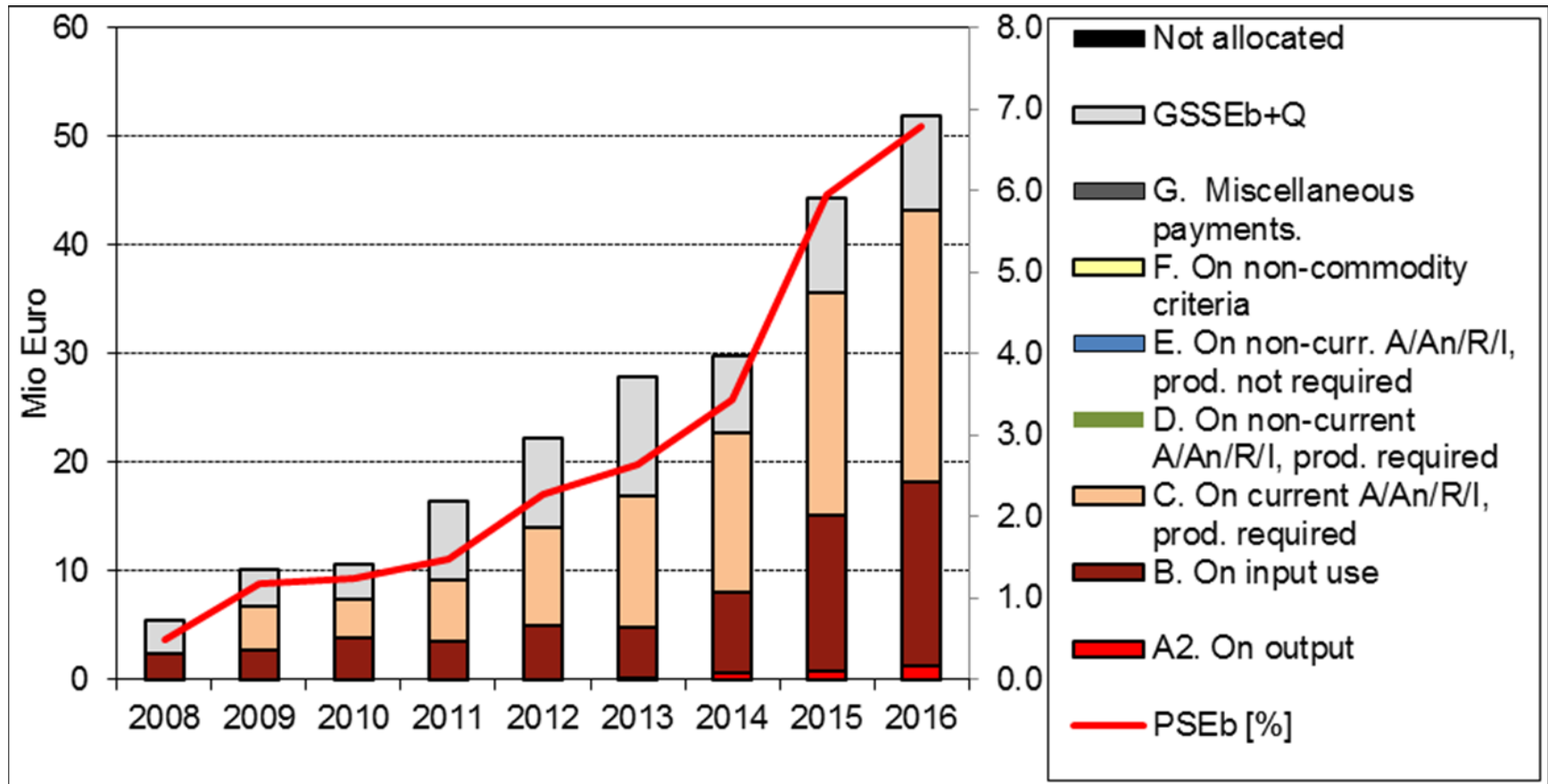
- $EPC = NPC$ if $x=0$ or $t_o=t_i$

- Sum of all budgetary payments to individual producers
- Approach by Rednak, Volk and Erjavec (2013): Agri-Policy Measures (APM) tool
 - Market and direct producer support measures
 - Structural and rural development measures
 - General measures related to agriculture (e.g. food safety & veterinary agencies)

Combining all elements: OECD's Total Support Estimate

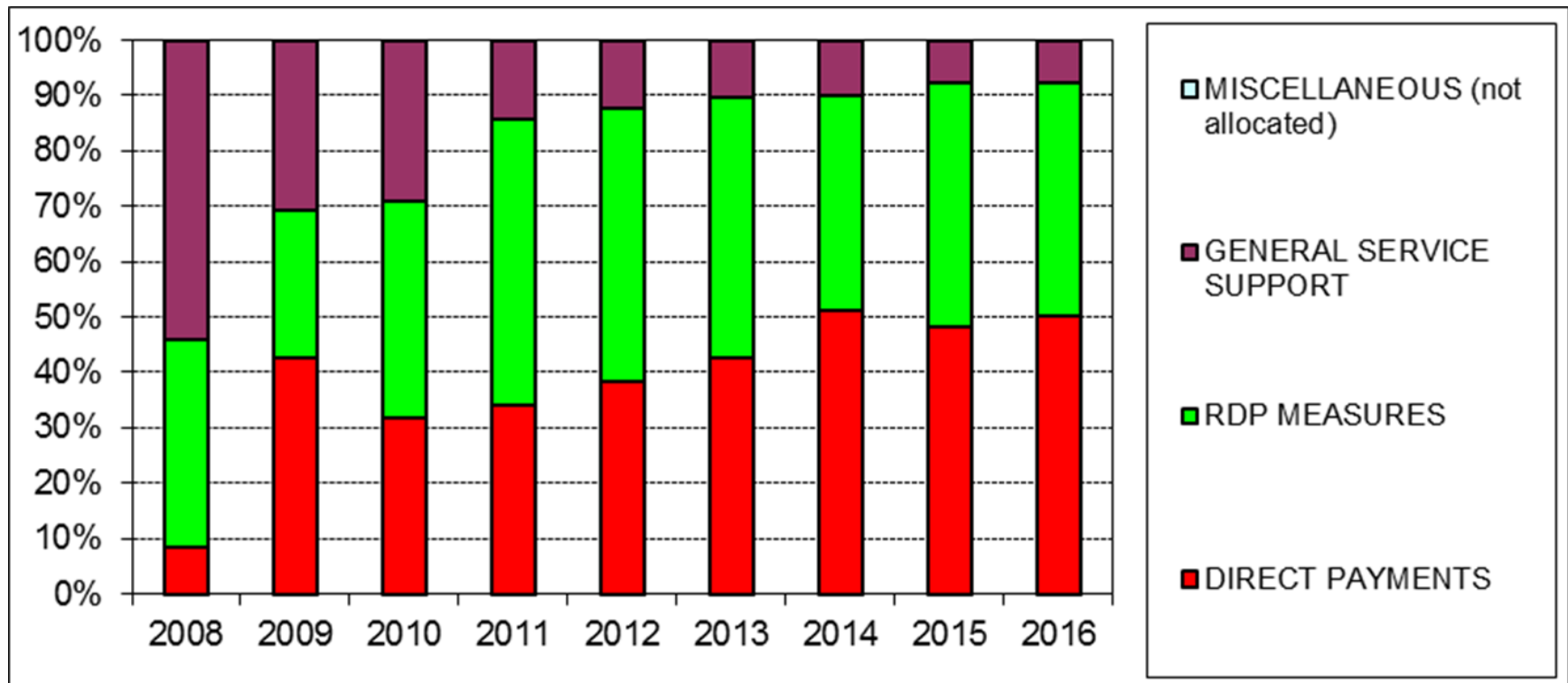
- Total Support Estimate (TSE): Total transfers to producers and consumers associated with agricultural policies
 - Producer Support Estimate (PSE): Share of producer revenue due to agricultural policy
$$APSE = q^S(p_i^S - p_w^S) + D - L$$
$$PSE [\%] = (100 \cdot APSE) / (q^S p_i^S + D - L)$$
 - Consumer Subsidy Equivalent (CSE):
$$CSE [\%] = (-q^C(p_i^C - p_w) + G) / q^C p_i^C * 100$$
 - General Services Support Estimate (GSSE): government expenditures for sector in general

Illustration: Kosovo



Source: Own calculation based on MAFRD

Illustration: Kosovo (II)



Source: Own calculation based on MAFRD

Illustration: Choice of reference price

- Identification of net trade status: Example Moldova net exporter of wheat
- Reference border price: free on board (fob) versus cost insurance freight (cif)

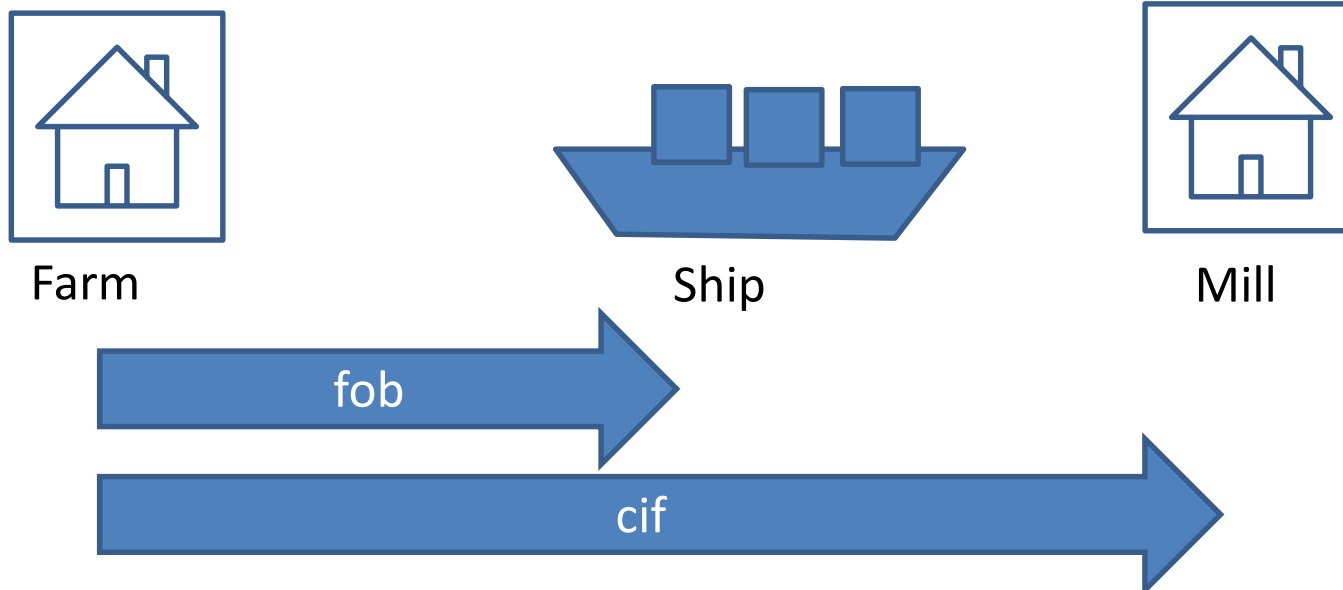
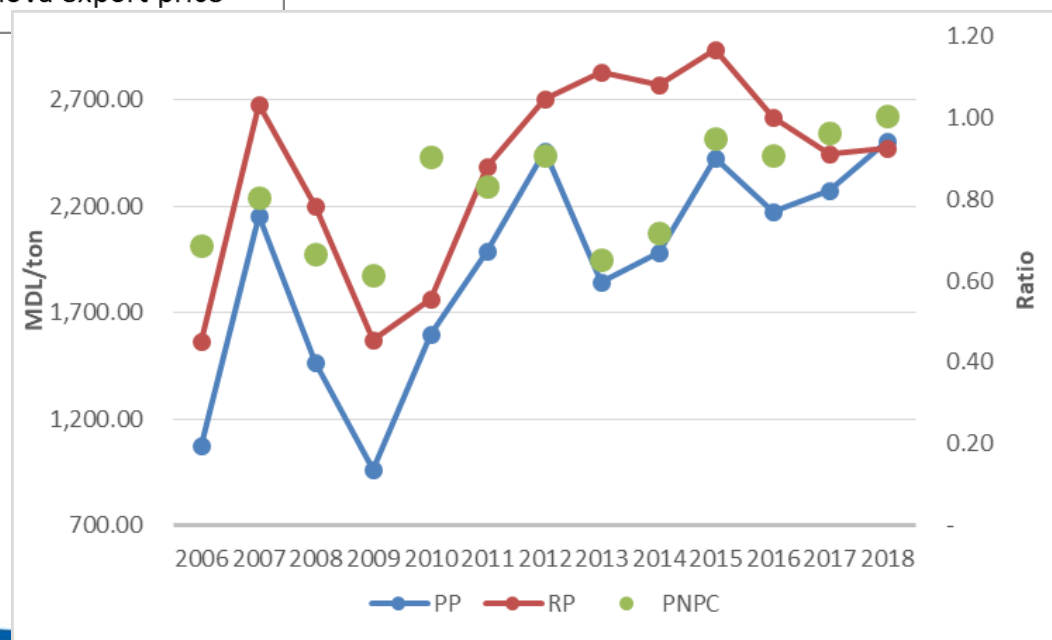
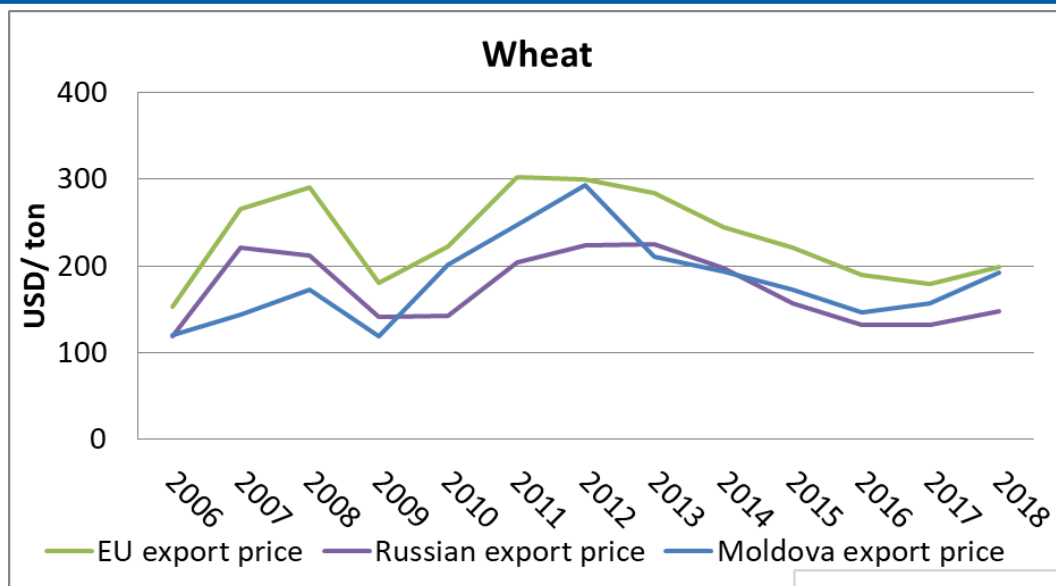


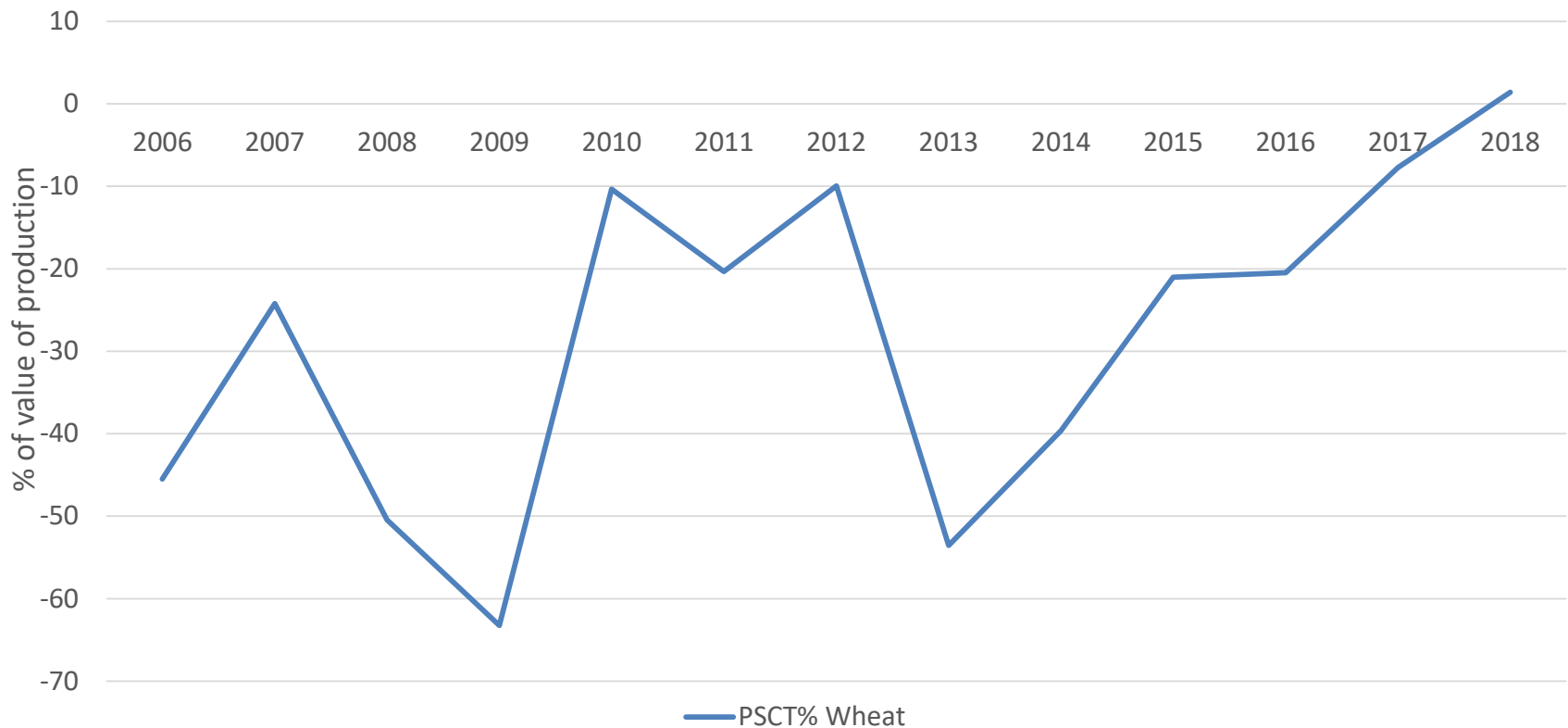
Illustration: Choice of reference price (II)



Sources: Own computation based on European Commission, OECD, Moldova Customs

Illustration: Republic of Moldova - Wheat

Producer Single Commodity Transfer - Wheat



Source: Own computation based on OECD, Ministry of Agriculture, IMF

- Indirect ways of support
 - Tax preferences
 - Preferential treatment in social security system
- Feedback effects e.g. via exchange rates or relative factor prices

- Range of approaches to quantify agricultural policy support consistently
- Choice of approach driven by research objective
- More comprehensive measures – more data demanding
- Coverage of Central Asia and Caucasus countries quite limited

- **Anderson, Kurzweil, Martin, Sandri, Valenzuela (2008):** Measuring Distortions to Agricultural Incentives, Revisited, World Bank, *Policy Research Working Paper No. 4612*. Washington D.C.: 44.
 - Updates of dataset: <http://www.ag-incentives.org/> (unfortunately, low coverage of CIS countries)
- OECD Agricultural policy monitoring and evaluation: <http://www.oecd.org/agriculture/topics/agricultural-policy-monitoring-and-evaluation/>
- **Volk, Rednak, Erjavec, Rac, Zhllima, Gjeci, Bajramovic, Vasko, Kerolli-Mustafa, Gjokaj, et al. (2019):** Agricultural Policy Developments and EU Approximation Process in the Western Balkans, *JRC Technical Reports*. Luxembourg: Publications Office of the European Union.



Leibniz Institute of Agricultural Development
in Transition Economies

Questions & Suggestions